

S 36 X *RaZor*

Truck-mounted concrete pump

NEW:

- > RZ-Folding
- > 5-section boom
- > low weight



Vertical reach		35.12 m
Concrete output	max.	161 m ³ /h
Pressure on concrete	max.	85 bar

MADE IN GERMANY
 by SCHWING-Stetter



RECORD BREAKING ENGINEERING

The S 36 X RaZor from SCHWING

Advantages and benefits at a glance

Pump kit

The SCHWING control block provides full hydraulic switching of the ROCK and differential cylinders. This ensures outstanding reliability even in difficult operating conditions and makes servicing the system a breeze.



Wheelbase:

Concrete valve

Thanks to its intelligent design, the ROCK valve suffers significantly less wear and tear than other concrete valves. It is also quick to clean and is demonstrably easier to maintain. The advantages for the S 36 X RaZor: shorter servicing times, higher machine uptime and lower maintenance costs.



Supply control

The water box can be filled and emptied, and the water pump, agitator, spray hose, high pressure cleaner and compressor, all controlled via the standardised supply control. This is the standard for all SCHWING truck-mounted concrete pumps for greater clarity and ease of operation.



Outriggers

The unique combination of front X and rear H outriggers results in a uniquely small footprint. The support legs are designed to withstand the rigours of daily life on the building site - thanks to the protected piston rods and internally laid hydraulic lines.



Optional from 2023: Remote control SC 50

The new modern **colour display**, light weight, easy to use and comfortable SC 50 helps minimise fatigue, allowing the operator to focus on the job for extended periods. The powerful batteries guarantee an operating time of at least 8 hours.



Open hydraulic system

The S 36 X RaZor open hydraulic system converts the engine power efficiently into pump power with little loss. Thus, typical jobsite output rates can be realized with a fuel-saving engine speed of just over 1000 rpm.



High resolution Colour display: VECTOR II control

The machine operator can inspect machine data, operating conditions and settings on S 36 X RaZor, changing various parameters, all through the intuitive VECTOR control. The integrated diagnostic system ensures safe operation and also reminds the operator when maintenance is necessary.



Hinged sideboard

The hinged sideboard on the left is standard and includes an integrated tube shelf. Hoses, pipes and other accessories can be transported safely and conveniently. On request, a multi-part sideboard is available over the entire length of the side (only in conjunction with a water tank at the rear).

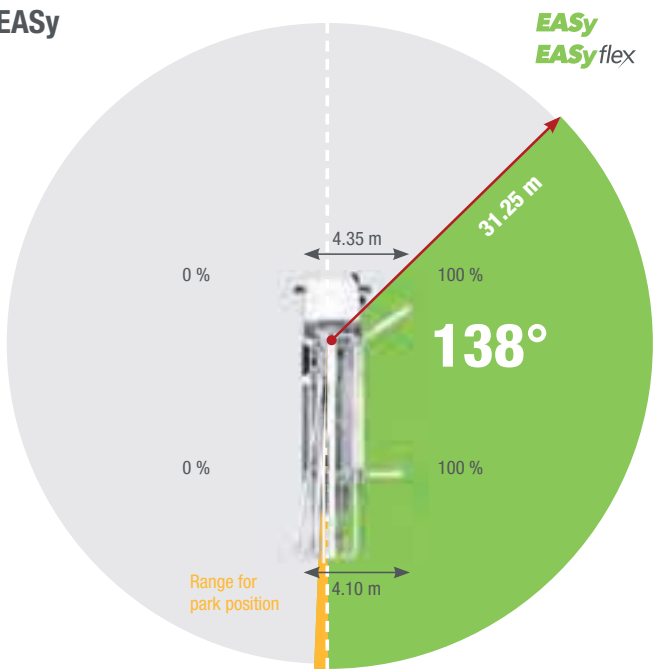


4,200 mm

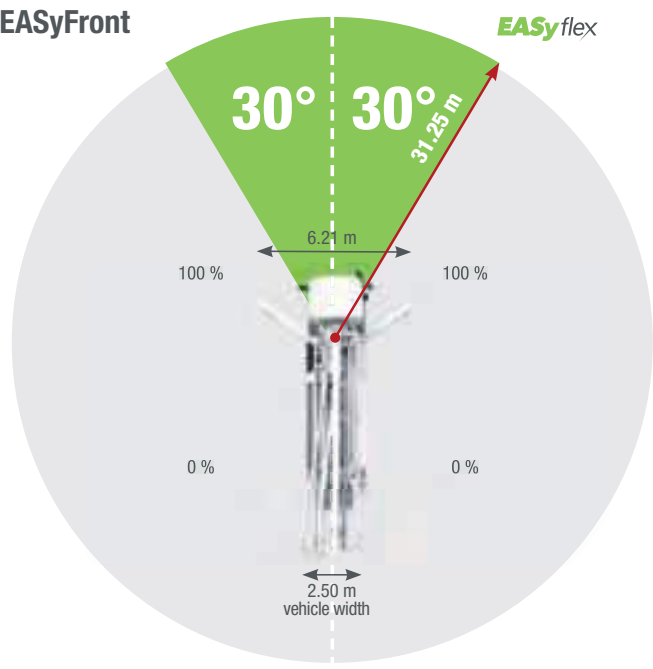
EASy and EASyflex

The outrigger systems EASy and EASyflex extend the range of applications of the S 36 X. With EASy, the concrete pump can be safely supported on one side, if required, thereby covering a working range of 138°. EASyflex provides further outrigger combinations and as such, more flexibility on the jobsite. In this way, pump applications can be achieved with the maximum working safety even in difficult, restricted spaces. More flexibility for more safety.

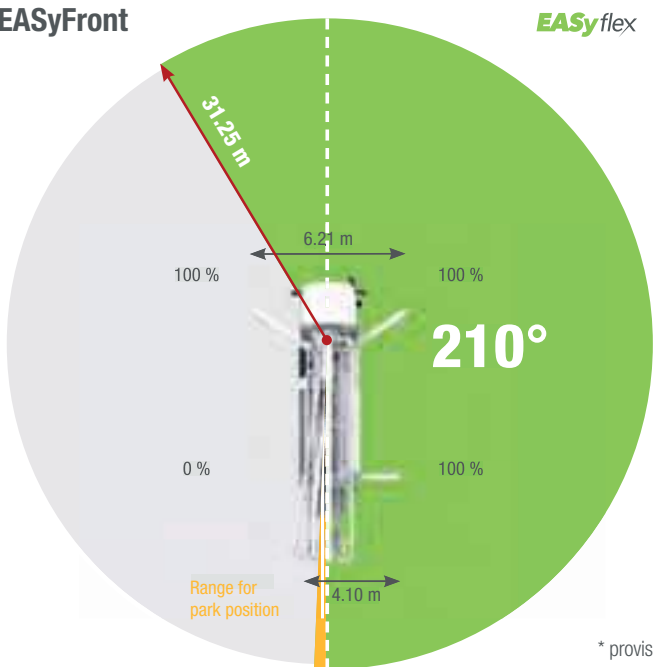
EASy



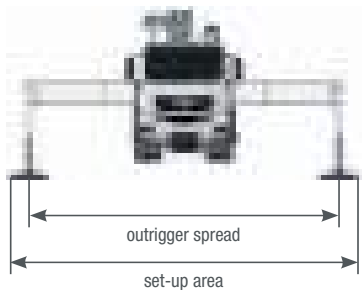
EASyFront



EASy with EASyFront



* provisional values

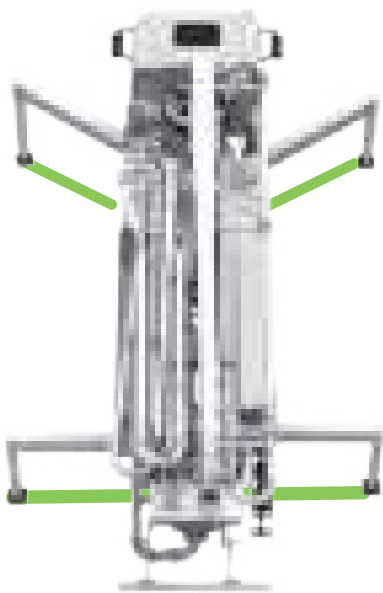


The outrigger spreads as specified are measured from the centre of the outrigger leg. Any cribbing or underlay timbers must be taken into account when determining the required set-up area.

Space-saving outriggers

Less set-up space, more flexibility.

Because of the unique combination of front X- and rear H-outriggers, the S 36 X RaZor needs the smallest set-up space in its class. Rear H-outriggers slide out to offer operators significant advantages over the more common swing-out rear outriggers, as they allow the S 36 X RaZor to be deployed to sites where other concrete pumps simply will not fit. In addition, the rear H-outriggers offer lots of storage space on both sides for accessories and hoses. The standard 3.20-metre-long sideboard on the left-hand side can be hinged and features integrated hose/pipe mounts. A hinged sideboard with an extended length of 5.00 metres is available as an option.



S 36 X RaZor with combined X and H outriggers

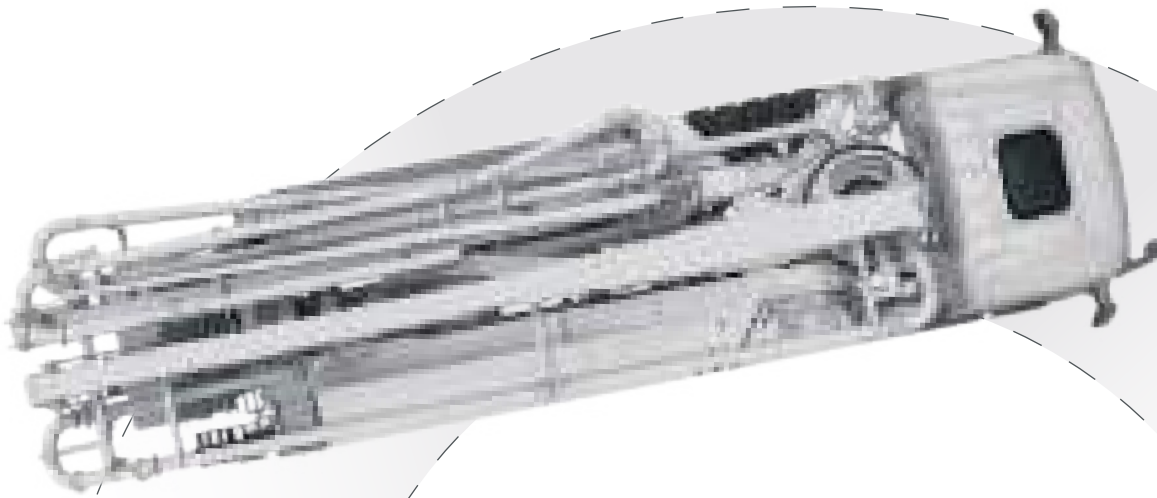


Concrete pump with combined X and folding outriggers

Short wheelbase

Outstanding manoeuvrability - on street and on site.

At only 4.20 metres, the shortest wheelbase in its class makes the S 36 X RaZor an exceptionally manoeuvrable truck-mounted concrete pump. Operator's advantage: The S 36 X RaZor makes manoeuvring roundabouts, narrow roads or within construction sites easier and safer.



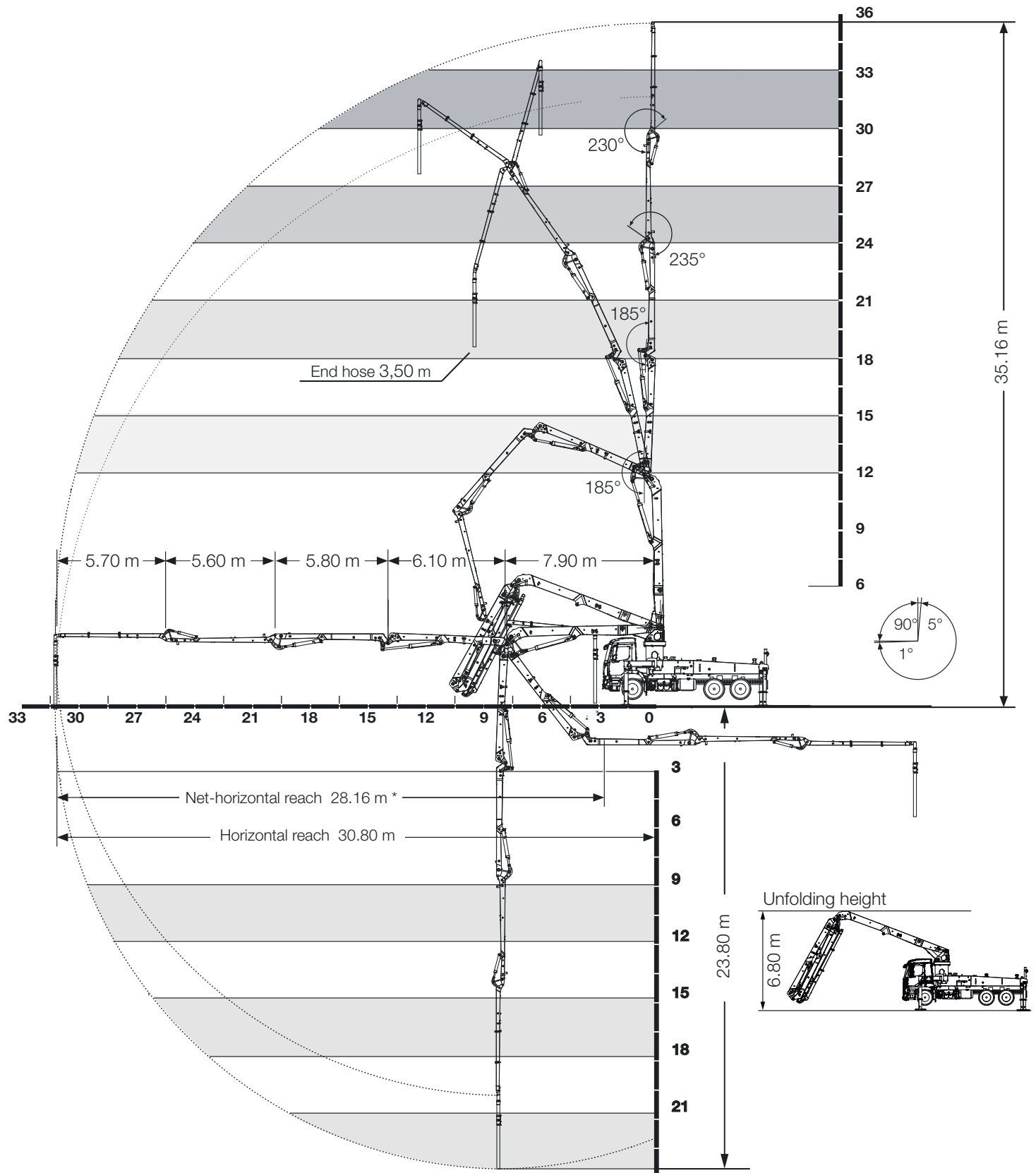
Technical Data

Technical drawing of a crane with dimensions and forces. The crane is shown from a top-down perspective. The dimensions are: width 7,12 m, height 5,70 m, and depth 6,21 m. The forces are: 150 kN at the front left, 190 kN at the front right, 150 kN at the rear left, and 190 kN at the rear right. The crane is labeled with 2 x 365°.

*depending on the chassis **other chassis possible

S 36 X RaZor Truck-mounted concrete pump

Working range



* from front bumper

** from centre of turret



schwing-stetter



schwing.stetter



schwing.stetter

RaZor



Boom

With its five-section boom and flexible RZ folding, the new S 36 X RaZor impresses with its particularly low unfolding height of less than 6.80 m.

The truck-mounted concrete pump also benefits from its low space requirement thanks to its rear H-support and its high manoeuvrability thanks to its wheelbase of only 4.20 m. Thanks to consistently modern lightweight construction, the S 36 X RaZor also remains a lightweight.

SCHWING concrete pumps. Efficiency as standard.



SCHWING
Stetter

SCHWING GmbH
Heerstrasse 9-27 · 44653 Herne, Germany
Phone +49 23 25 - 987-0 · Fax +49 23 25 - 72922
www.schwing-stetter.com · info@schwing.de

Stetter GmbH
Dr.-Karl-Lenz-Strasse 70 · 87700 Memmingen, Germany
Phone +49 83 31 - 78-0 · Fax +49 83 31 - 78 275
www.schwing-stetter.com · info@stetter.de

Subject to technical and dimensional modifications. Illustrations are non-binding. The exact standard specification, the scope of delivery and the technical data are detailed in the offer.