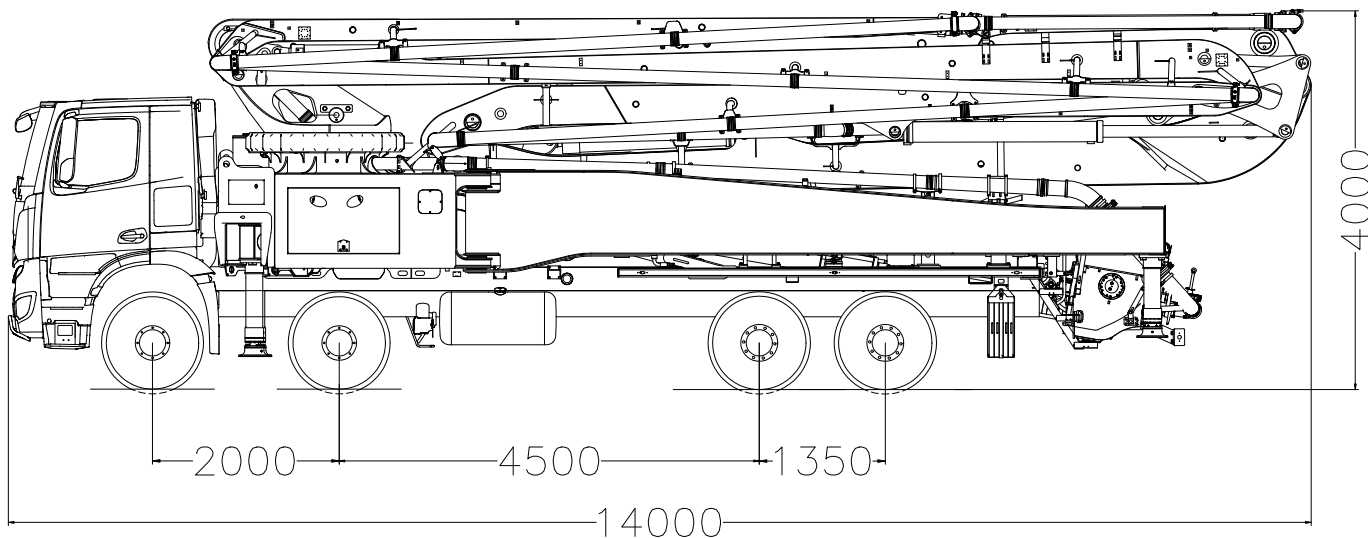


Truck-mounted concrete pump

SY56 RZ6-200

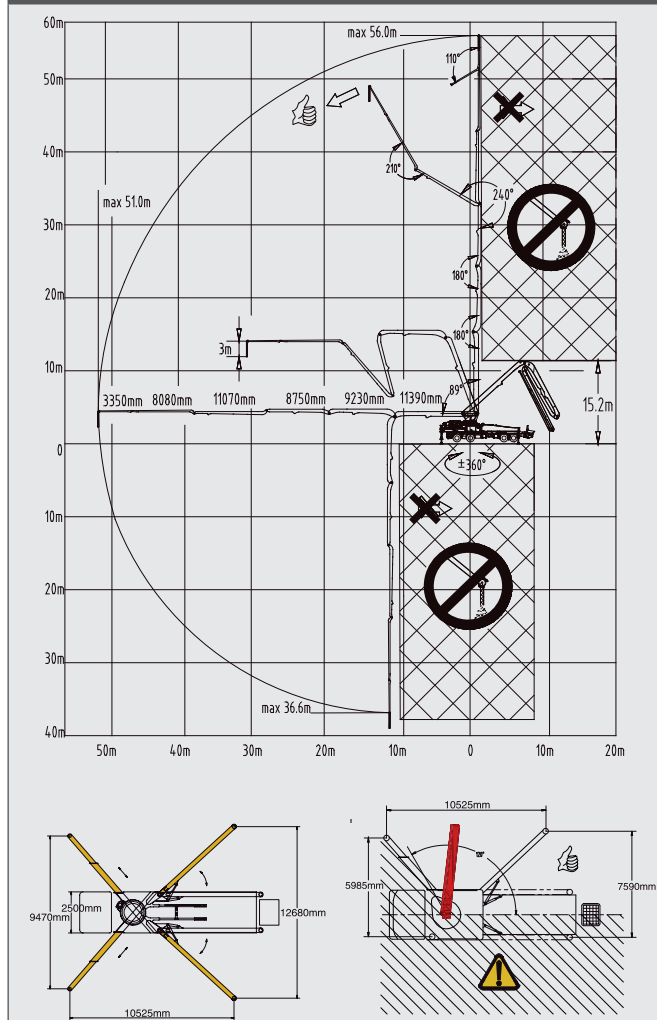


Note: Standard version. Dimensions and weights depend on truck, pump model and equipment. For illustration only.

Technical data

Boom	Folding system	6-arm RZ
	Vertical reach	56.0 m
	Horizontal reach	51.0 m
	Reach depth	36.6 m
	Unfolding height	15.2 m
	End hose length	3 m
Support	Outrigger spread front	9.5 m
	Outrigger spread rear	12.7 m
Dimensions	Overall length	14.0 m
	Width	2.55 m
	Height	4.0 m
Core pump	Output	160 m ³ /h
	Pressure	85 bar
	Strokes/min	26
	Delivery cylinder Ø	260 mm
	Stroke length	1900 mm

Reach diagram / support



Standard Equipment SY56 RZ6-200

Chassis	Transfer Gear Box
	Towing eye
Cleaning	Water tank 600 l
	Water pump 150 l/min 20 bar
Delivery line	2-layer delivery line – DN 125, 5.5"
	End hose 3 m DN 125, 5.5"
Hopper	Concrete hopper with agitator
	Central lubrication hopper, hydraulically
	Hard metal wear parts kit
	Switchover cylinder diameter = 100 mm
	Agitator safety switch off, lever switch
Lighting	Working light for illuminating hopper
	Side marker lamps
Pump	Core pump with 1900 mm stroke
	Delivery cylinder with 260 mm diameter
	Core pump with 160 m³/h delivery rate
	Delivery cylinder chrome-plated
	Delivery piston standard
Control System	SANY SYLD user interface display
	SANY SYMC control system
	Radio remote control propotional
	2nd radio remote control incl. 40 m cable

Support	Boom pedestal (X-type outrigger and swing out legs)
	OSS one side support (assistance device)
	Support plates (4x) in magazine (2x) open
	Swivel support plates
Safety	Chassis horn via remote control on hopper
	Handrail on rearsteps
	Horn at the boom, button on rear controlbox
	Warning device boom not in cradle
Additional features	User manual and spare part list
	Stowage Box
	Painting: Pedestal and hopper in yellow, arm assembly and delivery line in red, frame in black
	Road approval KIT (markers & underrun protection)
	Platform aluminum
	Rear steps, left & right side
	Plastic hopper cover, foldable

See quotation for exact serial delivery scope.

Materials and specifications are subject to change without further notice in accordance with our continuous technical innovations. Photos and illustrations may include additional equipment.
All rights reserved. 2007

Putzmeister Concrete Pumps GmbH

Max-Eyth-Straße 10 · 72631 Aichtal, Germany
P.O.Box 2152 · 72629 Aichtal
Tel. +49 (7127) 599-0 · Fax +49 (7127) 599-520
pmw@putzmeister.com · www.putzmeister.com